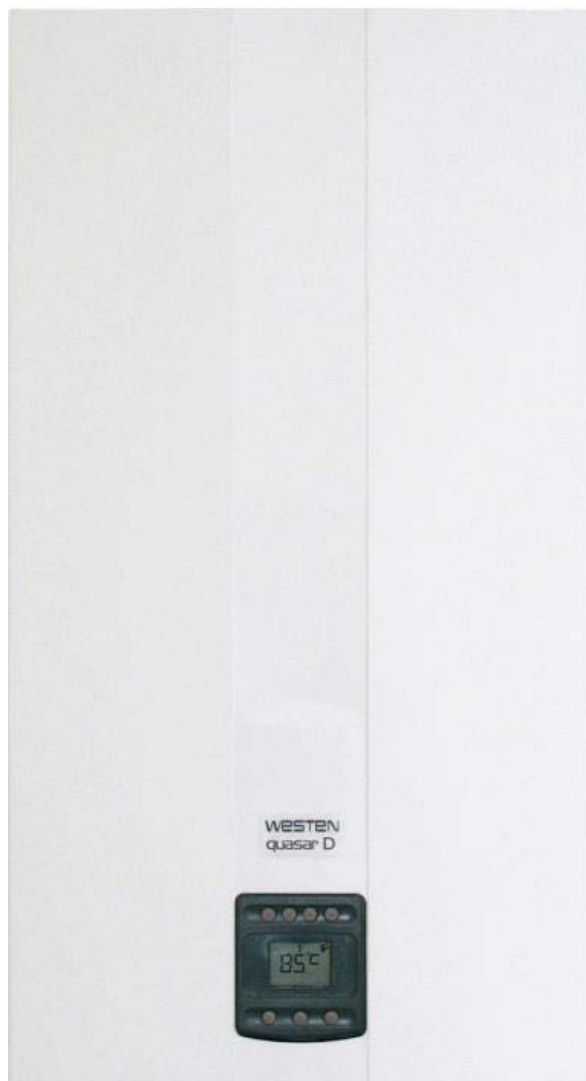


WESTEN

The smart choice for your home comfort



quasar D

SPARE PARTS CATALOGUE

- January 2015 -

Ремонт, сервис и запчасти BAXI

Москва, ул. Народного Ополчения, д. 34, стр. 3 (499) 519-03-79, моб. (903) 615-82-73 boilersp@mail.ru

HOW TO READ THE SPARE PARTS CATALOGUE

In the spare part catalogue, after the exploded diagrams, there are the components lists of the boilers; this is the meaning of the different columns:

- Pos. Identification number of the component in the exploded diagram of the boiler.
- Description Short description of the component.
- Code BAXI S.p.A. code of the component.
- Tab. XX XX is the exploded diagram number of the boiler taken into consideration.

Until 31th December 2011

- From serial number Date (year and week) identifying the beginning of production of a component (taken from the serial number of the boiler).
e.g. B005: year 2000 (B identifies the decade 2000-2009; 0 identifies the year) – 5th week.
If the box is empty, the component is in use from the beginning of production of the boiler.
- To serial number Date (year and week) identifying the end of production of a component (taken from the serial number of the boiler).
e.g. B012: year 2000 (B identifies the decade 2000-2009; 0 identifies the year) – 12th week.
If the box is empty, the component is still in use.
- Interchangeable It identifies the interchangeability between the new component and the old one.
YES: components are interchangeable.
NO: components are not interchangeable.

From 1st January 2012

- From serial number Date (year and week) identifying the beginning of production of a component (taken from the serial number of the boiler).
e.g. 1201: year 2012 (1 identifies the decade 2010-2019; 2 identifies the year) – 01th week.
If the box is empty, the component is in use from the beginning of production of the boiler.
- To serial number Date (year and week) identifying the end of production of a component (taken from the serial number of the boiler).
e.g. 1225: year 2012 (1 identifies the decade 2010-2019; 2 identifies the year) – 25th week.
If the box is empty, the component is still in use.
- Interchangeable It identifies the interchangeability between the new component and the old one.
YES: components are interchangeable.
NO: components are not interchangeable.

TABELLA COLLEGAMENTO CODICE CALDAIA - ESPLOSO TABLEAU CONNECTION CODEX CHAUDIERE - VUE ECLATEE BOILERS CONNECTION BOARD - EXPLODED VIEW

BOILER CODE	BOILER DESCRIPTION	EXPLODED REF.
CODICE CALDAIA	DESCRIZIONE CALDAIA	RIF. ESPLOSO
CODIGO CALDERA	DESCRIPCION CALDERA	REF. EXPLOSIONADO
CODE CHAUDIÈRE	DESCRIPTION CHAUDIÈRE	RÉF. EXPLOSÉE
BYH442243972	QUASAR D 24	Tab 396
BYH442243971	QUASAR D 24	Tab 396
BYH442243970	QUASAR D 24	Tab 378
BYH446243972	QUASAR D 24F	Tab 395
BYH446243971	QUASAR D 24F	Tab 395
BYH446243970	QUASAR D 24F	Tab 377

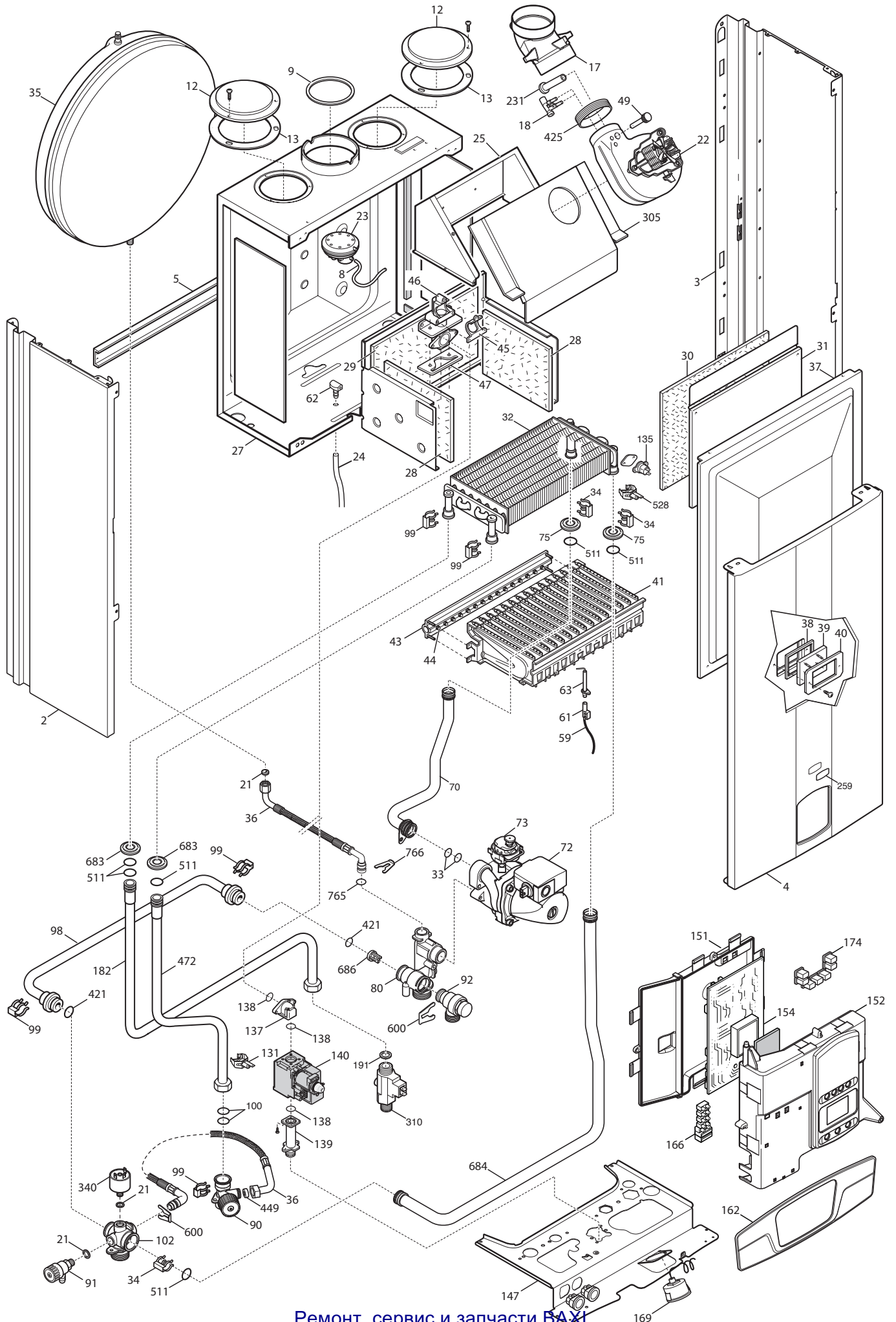
Pos	Code	Description code	BVH44243970 24	BVH44243971 24	BVH44243972 24 F	BVH446243970 24 F	BVH446243971 24 F	BVH446243972 24 F	To serial number	From serial number	Intercha ngeable:
2	5698660	LEFT PANEL ASSEMBLY ECO4 ATM.	•	•	•						
2	5698680	LEFT PANEL ASSEMBLY ECO4 FF				•	•	•			
3	5698650	RIGHT PANEL ASSEMBLY ECO4 ATM.	•	•	•						
3	5698670	RIGHT PANEL ASSEMBLY ECO4 FF				•	•	•			
4	628830	FRONTAL PANEL ASS. ECO4 ATM	•	•	•						
4	5117900	FRONTAL PANEL ECO4 WESTEN				•	•	•			
5	5117420	TRAVERSE SIDES CONNECTION FF				•	•	•			
5	5117460	TRAVERSE SIDES CONNECTION-ATM-	•	•	•						
8	5408080	PRESSURE SWITCH PIPE L=270				•	•	•			
9	5115860	RESTRICTOR AIR INTAKE D60/43				•	•	•			
12	5108690	PLATE BLANKING				•	•	•			
13	5407400	SUCTION CAP GASKET				•	•	•			
17	5214290	BEND FLUE EMISSIONS ECO4				•	•	•			
18	5413850	PRESS.SENS.VENTURI SINGLE TAP				•	•	•			
21	5402050	WASHER-SEALING	•	•	•	•	•	•			
22	5682150	FAN				•	•	•			
23	628610	PRESS.SWITCH ASS. 0,68mbar HONEYW.				•	•	•		C121	YES
23	628720	FLUE PRESS.SWITCH 0,68 mbar				•	•	•		C120	
23	710789900	PRESSURE SWITCH ASSEMBLY HUBA				•	•	•		1448	
23	721890300	FLUE PRESS.SWITCH 70-60Pa HUBA				•	•	•		1449	YES
24	5414320	PIPE-VALVE COMPENS.4,5x8 L=170				•	•	•			
25	5118150	CONVEYOR ASSEMBLY ECO4 225mm				•	•	•			
27	5668290	COMBUSTION CHAMBER ASSEMBLY	•	•	•						
27	5700480	COMBUSTION CHAMBER ASSY 225mm				•	•	•			
28	5213210	INSULATING PANEL				•	•	•			
28	5213220	INSULATING PANEL	•	•	•						
29	5213280	INSULATING PANEL	•	•	•					B506	YES
29	5214630	INSULATING REAR PANEL FF 225				•	•	•			
30	5213380	FRONTAL INSULATING PANEL	•	•	•						
30	5214680	INSULATING FRONTAL PANEL FF225				•	•	•			
31	5114290	COMB. CHAMBER FRONTAL PANEL	•	•	•						
31	5700540	COMB.CHAMB.FRONTAL PANEL FF225				•	•	•			
32	616170	BI-THERMAL HEAT EXCHANGER+ OR	•	•	•					B403	YES
32	5663720	BI-THERMAL HEAT EXCHANGER	•	•	•					B402	
32	5700520	HEAT EXCH.H2O/GAS 225mm VALMEX				•	•	•			
33	5403130	O-RING 22 x 3	•	•	•	•	•	•		1311	
33	710963000	OR 21,5X3 EP70 TFL	•	•	•	•	•	•		1312	YES
34	5113650	PRIMARY EXCHANGER FIXING CLIP	•	•	•	•	•	•			
35	5693900	RECT.EXPANSION VESSEL 6I-CIMM-	•	•	•						

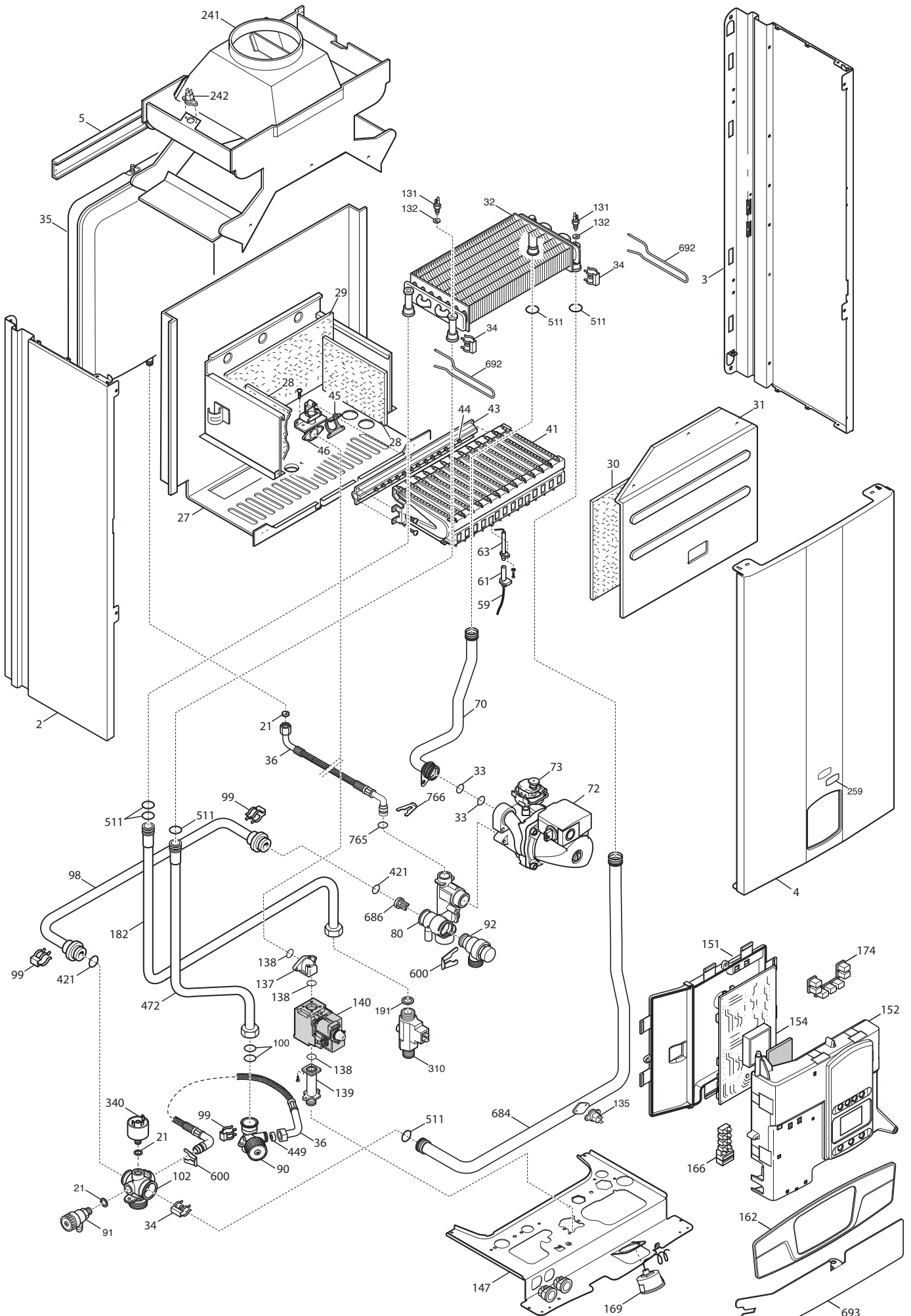
Pos	Code	Description code	BYH44243970 24	BYH44243971 24	BYH44243972 24 F	BYH44243970 24 F	BYH44243971 24 F	BYH44243972 24 F	To serial number	From serial number	Intercha ngeable:
35	5693920	CIRC.EXPANS.VESSEL 6I CIMM						•			
35	5693920	CIRC.EXPANS.VESSEL 6I CIMM				•	•				YES
35	5695230	CIRC.EXPANS.VESSEL 6I ZILMET				•	•		C012		
36	5698830	PIPE EXPANSION VESSEL	•	•	•	•	•	•			
37	5663830	SEALED CHAMBER FRONT PANEL				•	•	•			
38	5401610	VIEWING WINDOW GASKET				•	•	•			
39	5203930	VIEWING WINDOW				•	•	•			
40	5115590	SURROUND-SIGHT GLASS				•	•	•			
41	5663710	BURNER ASSEMBLY (13 ELEM.)	•	•	•						
41	5700530	BURNER ASSEMBLY 11 ELEMENTS				•	•	•			
43	5698690	GAS RAMP 13HOLES/INJECT. d1,18	•	•	•						
43	5700500	GAS RAMP 11 HOLES/INJECT d.1,35				•	•	•			
44	5666390	L.P.G. INJECTORS KIT	•	•	•						
44	5669460	NATURAL GAS INJECTORS KIT	•	•	•						
44	5704730	KIT TRANSF.GAS G31 11x0,85				•	•	•			
44	5705280	KIT TRANSF.GAS G20 11x1,35				•	•				
45	5407940	GASKET-BURNER MANIFOLD	•	•	•	•	•	•			
46	5657180	ADAPTOR-MANIFOLD	•	•	•	•	•	•			
47	5407810	GASKET-MANIFOLD ADAPTOR				•	•	•			
49	5409520	HOSE ADAPTER CAP				•	•	•			
59	8612400	IGNITION CABLE L=250 ECO4	•	•	•	•	•		C112		
59	710430800	IGNITION CABLE L=250 RESIST.	•	•	•	•	•				YES
59	710430800	IGNITION CABLE L=250 RESIST.			•			•			
61	5407830	INSULATION BOOT - ELECTRODE	•	•	•	•	•	•			
62	5409570	SEALED CHAMBER HOSE ADAPTER				•	•	•			
63	8422570	ELECTRODE - IGNITION	•	•	•	•	•	•			
70	5700340	ASS.PIPE PUMP/EXCHANGER	•	•	•						
70	5700550	PIPE ASS.PUMP/EXCH.MAIN4 FF225				•	•	•	1438		
70	711216000	PIPE ASS.PUMP/EXCH.MAIN4 FF225				•	•	•		1439	YES
72	5698260	PUMP ONE SPEED 5meters WILO	•	•	•	•	•	•			
73	710139500	AUTOMATIC AIR VENT	•	•	•	•	•	•			
75	5404670	GROMMET - PIPE ASSEMBLY				•	•	•			
80	5214590	HYDRAULIC INLET GROUP/PUMP	•	•	•	•	•	•			
90	5700370	CONNECTION CH OUTLET/FILLING	•	•		•	•		C007		
90	710224400	CONNECTION CH OUTLET/FILLING			•			•			
90	710224400	CONNECTION CH OUTLET/FILLING	•	•		•	•			C008	YES
91	5652030	DRAINING TAP	•	•	•	•	•	•			
92	710071200	SAFETY VALVE 3 bar NOVASFER	•	•	•	•	•	•			
98	5214610	BY-PASS PIPE MAIN 4	•	•	•	•	•	•			
99	8380850	FIXING CLIP	•	•	•	•	•	•			
100	5406630	O-RING	•	•	•	•	•	•	1321		
100	711296900	O-RING 13,94X2,62 TFL	•	•	•	•	•	•		1322	YES

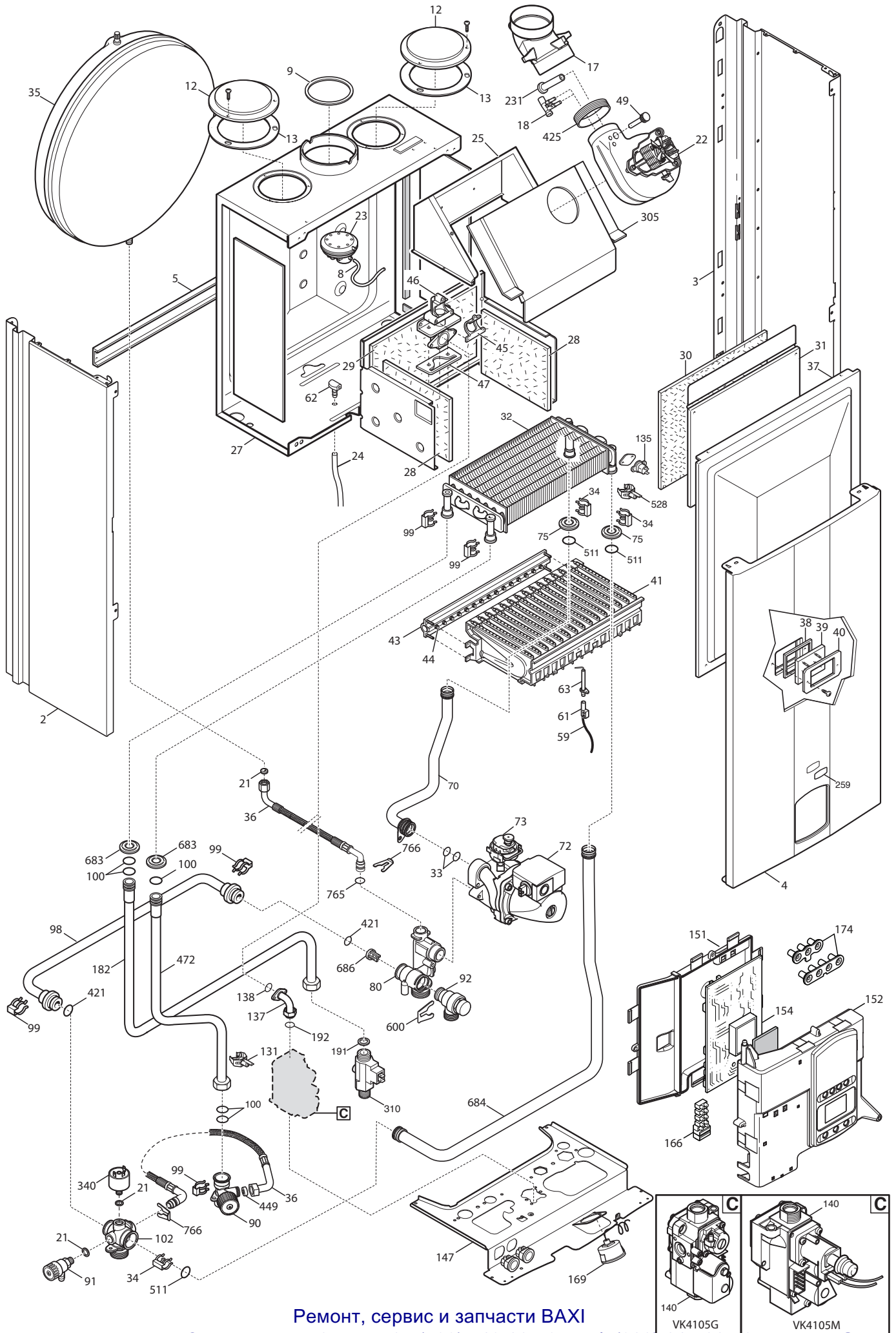
Pos	Code	Description code	BYH4243970 24	BYH4243971 24	BYH4243972 24 F	BYH46243970 24 F	BYH46243971 24 F	BYH46243972 24 F	To serial number	From serial number	Intercha ngeable:
102	5214600	GROUP HEATING INLET MAIN 4	•	•	•	•	•	•			
131	8435400	NTC SENSOR	•	•	•						
131	8435510	NTC SENSOR d.14				•	•	•			
132	5402830	WASHER - SENSOR SEALING	•	•	•						
135	9950760	THERMOSTAT - LIMIT	•	•	•	•	•	•			
137	5214270	GAS V. ELBOW OUTLET OPEN FLUE	•								
137	5214280	GAS VALVE ELBOW OUTLET FF				•					
137	5702350	PIPE GAS MAIN 4 ATM		•	•						
137	5702360	PIPE GAS MAIN 4 FF					•	•			
138	5402010	O RING 22.22x2.62	•	•	•	•	•	•			
139	5206620	CONNECTOR-GAS VALVE INLET	•			•					
140	5653610	GAS VALVE - SIGMA 845048	•			•					
140	5665220	GAS VALVE HON.	•			•					
140	5702340	GAS VALVE VK4105G M-M G3/4		•			•				
140	710669200	GAS VALVE VK4105M M-M G3/4			•			•			
147	5693850	CONNECTION TRAVERSE ECO4	•	•	•	•	•	•			
151	631660	CONTROL PANEL ECO4	•		•	•		•		1224	
151	631670	CONTROL PANEL MAINFOUR (G)		•			•			1224	
151	5413650	CONTROL PANEL COVER ECO4	•		•	•		•	1223		
151	5414290	ELECTR.BOX REAR COVER MAINFOUR		•			•		1223		
152	5698980	PRINT.CONTR.PANEL ECO4 WESTEN	•	•	•	•	•	•			
154	5702470	PCB GROUP HONEYWELL SM11460	•			•			1235		
154	5705240	PCB GROUP HONEYWELL SM11463		•			•		C107		
154	710591400	PCB HONEYWELL SM11463		•						C108	YES
154	710648100	PCB HONEYWELL SM11465					•			C108	YES
154	710825400	PCB SM11470			•			•			
154	710825400	PCB SM11470	•			•				1303	YES
154	711048700	PCB SM11470	•			•			1302		
166	5688430	TERM.BOARD/DOUBLE FUSE HOLDER	•	•	•	•	•	•			
169	8922460	MANOMETER d.40 XGR. BITRON	•	•	•	•	•	•			
174	628840	KEYBOARD 3 AND 4 BUTTONS	•	•	•	•	•	•			
182	5701380	WATER INPUT PIPE MAIN 4	•	•	•						
182	5701390	WATER INPUT PIPE MAIN 4 FF 225				•	•	•			
191	5408970	WASHER - SEALING G1/2	•	•	•	•	•	•			
192	5404650	SEALING WASHER G 3/4		•	•		•	•			
231	5409480	FLUE INTAKE				•	•	•			
241	5668420	CONVEYOR ASSEMBLY	•	•	•						
242	616160	FLUE SAFETY THERMOSTAT 70ø	•	•	•						
259	5700470	BRAND QUASAR D WESTEN	•	•		•	•				
259	710771400	BRAND QUASAR D WESTEN			•			•			
305	5118160	FAN BRACKET 225				•	•	•			
310	5667220	FLOW SWITCH BITRON	•		•	•		•			

quasar D

Pos	Code	Description code	BYH44243970 24	BYH44243971 24	BYH44243972 24	BYH44243970 24 F	BYH44243971 24 F	BYH44243972 24 F	To serial number	From serial number	Intercha ngeable:
310	710228100	FLOW SWITCH BITRON		•				•			
340	9951690	PRESSURE SWITCH	•	•	•	•	•	•			
421	5408270	O-RING 11,91 X 2,62 NBR	•	•	•	•	•	•			
425	5412270	GASKET FAN HT				•	•	•			
449	5640030	RETAINING VALVE	•	•	•	•	•	•			
472	5214580	DHW INLET PIPE MAIN4 OPEN FLUE	•	•	•						
472	5214670	DHW INLET PIPE MAIN 4 FF 225				•	•	•			
511	5404600	O.R. 17,86x2,62	•	•	•	•	•	•			
528	8435500	NTC SENSOR D18-ITS2410201/0-				•	•	•			
600	710045400	CLIP FLAT d.18	•	•	•	•	•	•			
683	5408810	GASKET GAS RAMP				•	•	•			
684	5214650	PIPE EXCH./HEAT.OUTLET FF 225				•	•	•	1438		
684	5700350	PIPE EXCHANGER/HEATING OUTLET	•	•	•						
684	711216100	PIPE EXCH./HEAT.OUTLET FF 225				•	•	•		1439	YES
686	5663020	BY-PASS PLUG ASSEMBLY	•	•	•	•	•	•			
692	5114360	PRIMARY EXCHANGER CLIPS	•	•	•						
693	5117440	PRINTED CNTR. PANEL PROTECTION	•	•	•						
765	710045700	O-RING d.9,19 X 2,62	•	•	•	•	•	•		1314	YES
765	710069700	O-RING 9,19X2,62 EPDM	•	•	•	•	•	•	1313		
766	5118110	FLAT SPRING diameter 10	•	•	•	•	•	•			
999	8414540	CABLE ROOM TH	•	•	•	•	•	•			
999	8414620	POWER CABLE	•	•	•	•	•	•			
999	8419040	CABLE - EARTH	•	•	•	•	•	•			
999	8513660	FAN WIRING ECO4				•	•	•			
999	8514030	HIGH VOLTAGE WIRING MAIN 4 SIT	•			•					
999	8514040	HIGH VOLT.WIRING MAIN4 HONEYW.	•		•	•		•			
999	8514050	LOW VOLT.WIRING 12P MAIN 4 ATM	•								
999	8514060	LOW VOLT.WIRING 6P.MAIN 4 ATM.	•								
999	8514070	LOW V.WIRING 12P. MAIN4 FF 225				•		•			
999	8514080	LOW VOLT.WIRING 6P.MAIN4 FF225				•		•			
999	8514130	LOW VOLT.WIRING 12P.MAINFOUR					•				
999	8514140	WIRING BT 6P. MAINFOUR					•				
999	8514150	HIGH VOLTAGE WIRING MAINFOUR		•			•				
999	8514160	GAS VALVE WIRING MAINFOUR		•			•				
999	8514170	LOW VOLT.WIRING 12P.MAINFOUR		•							
999	8514180	LOW VOLT.WIRING 6P.MAINFOUR		•							
999	710714500	LOW POWER CABLE 12PIN MAINFOUR			•						
999	710767000	LOW V. WIRING 6P. ATM			•						







Ремонт, сервис и запчасти BAXI

